



# MADE for Aquisition

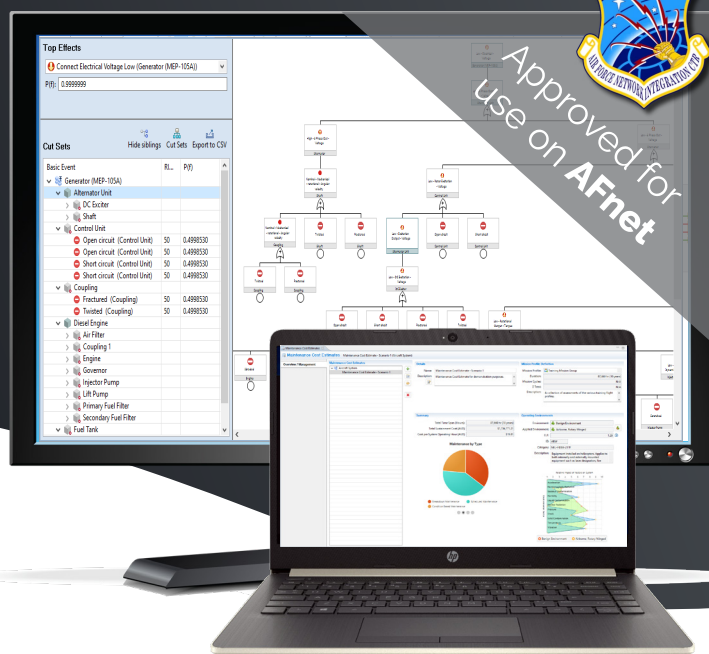
## Decision Support for Sustainment Concept Comparison and Analysis

During acquisition, decision-makers are asked to choose between competing bids that promise vastly different product support strategies, but are rarely expressed in comparable terms. For complex, mission-critical systems, sustainment decisions made at this stage lock in long-term outcomes for readiness, safety, and cost. Without a consistent way to assess and compare assumptions related to reliability, availability, and supportability across bids, organizations risk making decisions on incomplete or non-equivalent information, making it difficult to truly be a smarter customer and ensure an “apples-with-apples” evaluation.

MADE provides a structured decision-support framework that enables direct, objective comparison of competing sustainment strategies. By structuring reliability, maintenance, logistics, and cost data within a common analytical framework, MADE allows acquisition teams to evaluate and compare maintenance approaches, reliability assumptions, and lifecycle performance against required readiness, safety, and cost metrics. With built-in simulation and automation, MADE supports transparent, repeatable analysis that improves probity, defensibility, and confidence in bid evaluation, supporting better acquisition decisions from day one.

### Key Benefits:

- Compare operational support requirements
- Assess supplier source / cost inputs
- Risk identification and mitigation strategies
- Engineering-informed assessment of budget forecasts



Join Our Growing List of Customers



**PHM Technology**

Decisions better made

## Key Features That Support Acquisition Analysis

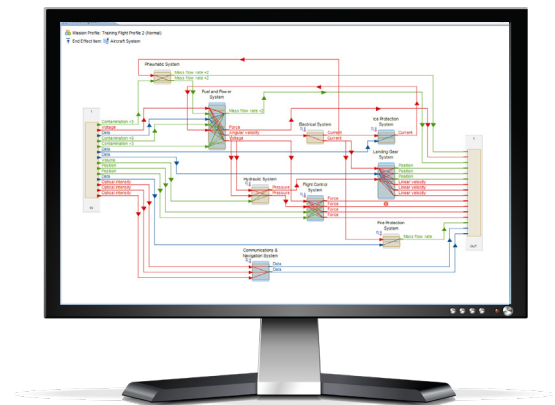


### 1. Simulation Enabled Trade Studies

### 2. Analysis Generation

### 3. Data Quality Assessment

### 4. Model-based Solution



Digital Risk Twin

## Acquisition Appraisal Solution Requirements:

Analysis toolset to compare the maintenance & life cycle costs of each bid to:

- Assess required in-service supplier support levels
- Compare projected supplier cost inputs / source requirements
- Analyze impact of alternate usage cycles / operating environments on sustainment estimates
- conduct economic trade studies based on engineering / safety requirements

## How MADE supports Acquisition Appraisal:

MADE enables your organization to:

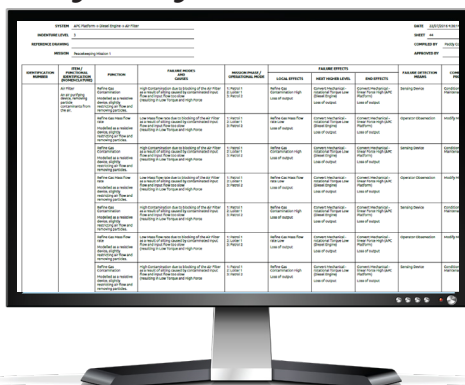
- Use a common model & analysis framework to assess all solutions
- Ensure engineering informed and verifiable supportability concept
- Identify the best value option based on requirements
- Support informed negotiation of performance-based support arrangements

## How MADE Supports Evidence-Based Assessment:

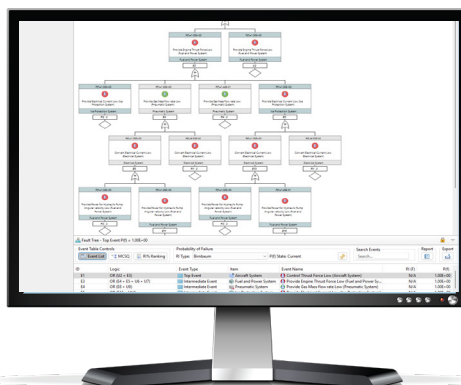
MADE uses a combined simulation model of the asset to represent each sustainment operating concept. The model supports the following analytical outcomes:

- **Technical:** evaluate reliability assumptions & maintenance effectiveness to stated objectives
- **Safety:** evidence the safety case for each bid (FMECA / FTA / RBD / RCM)
- **Budget:** support estimates are based on technical analysis

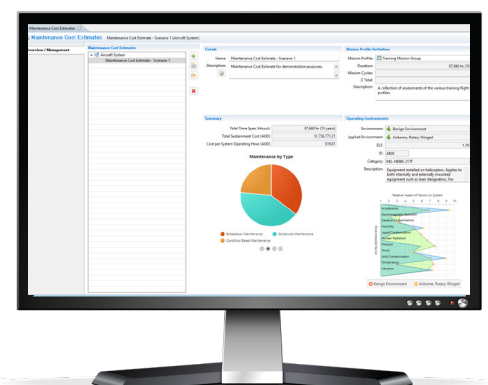
## Key Analyses:



Failure Mode & Effects Analysis



Fault Tree Analysis



Maintenance Cost Estimate